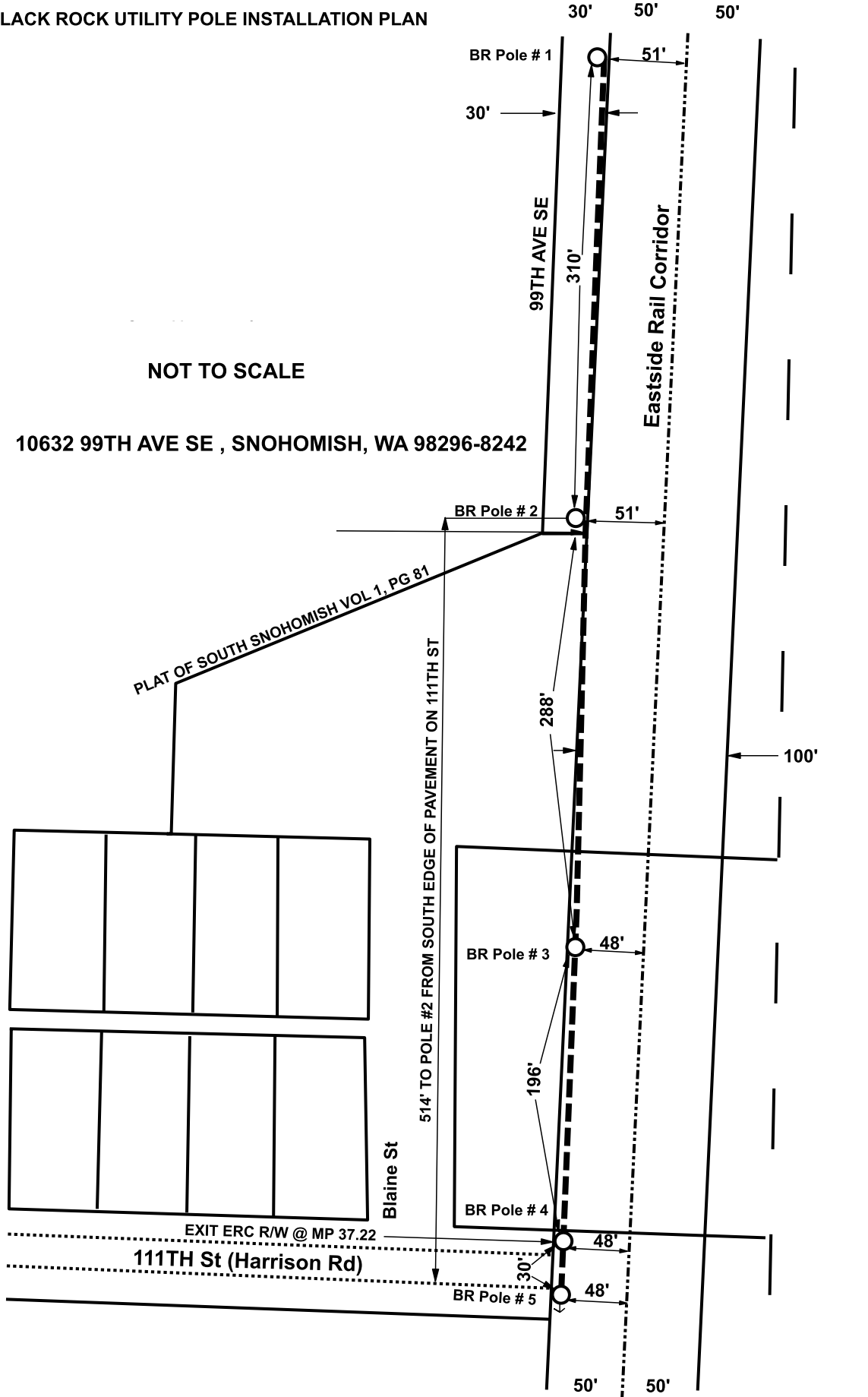


Exhibit A

BLACK ROCK UTILITY POLE INSTALLATION PLAN

NOT TO SCALE

10632 99TH AVE SE , SNOHOMISH, WA 98296-8242



WDH Black Rock, LLC



LEGEND			
--- --	SECTION LINE	-----	BLACK ROCK AERIAL F.O. PLANT
=====	EASTERN RAIL CORRIDOR & ADJACENT PROPERTY BOUNDARIES	○	UTILITY POLE
-----	RAIL CENTER LINE		
.....	111TH ROAD AS-BUILT		

3596-1030-Port of Seattle  
Snohomish WA

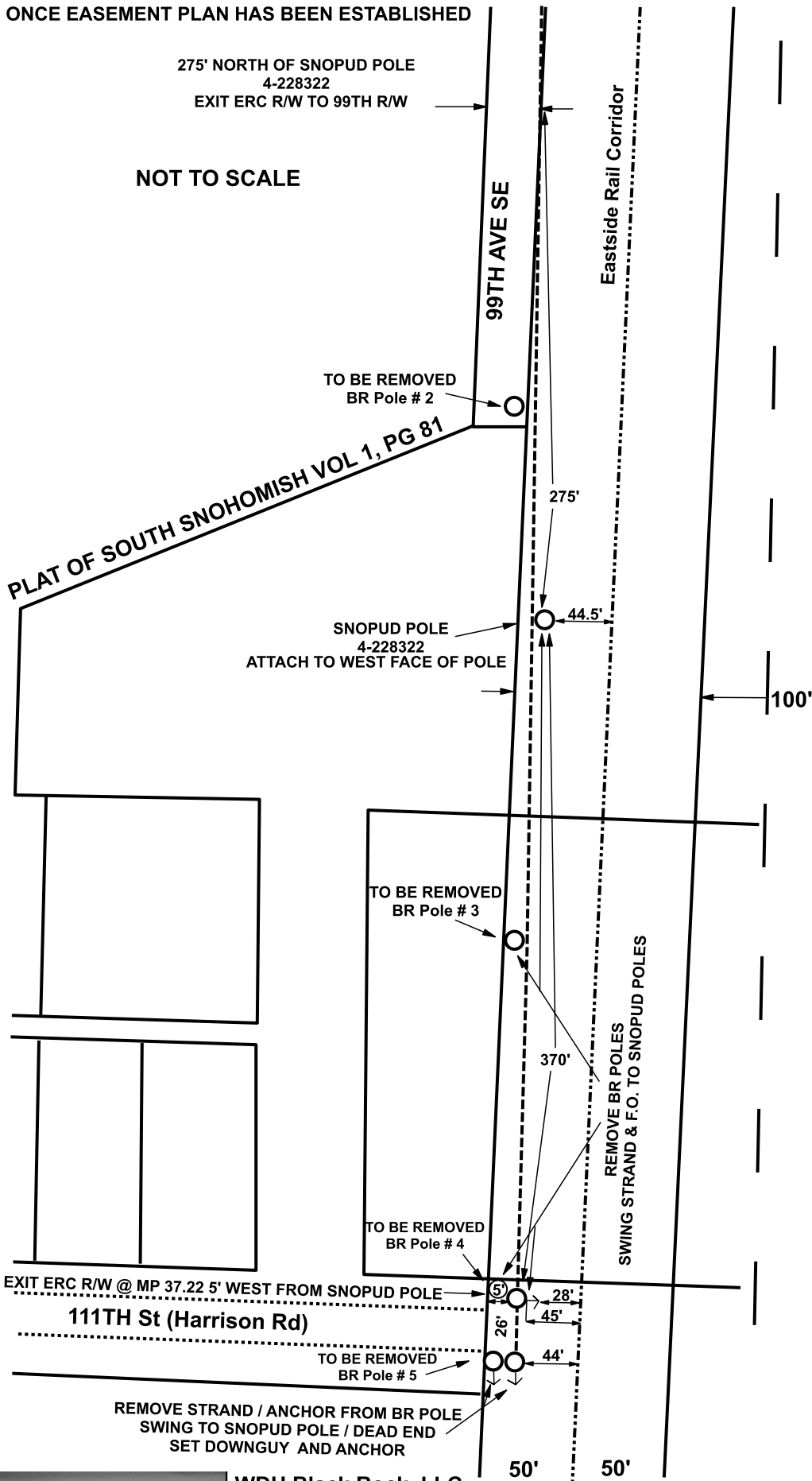
Date: 7/5/2013  
Sheet 1 of 2

Exhibit B

**BLACK ROCK UTILITY POLE REMOVAL PLAN  
NEW ATTACHMENT TO SNOPOD POLES  
ONCE EASEMENT PLAN HAS BEEN ESTABLISHED**

275' NORTH OF SNOPOD POLE  
4-228322  
EXIT ERC R/W TO 99TH R/W

NOT TO SCALE



WDH Black Rock, LLC



**LEGEND**

- SECTION LINE
- EASTERN RAIL CORRIDOR & ADJACENT PROPERTY BOUNDARIES
- RAIL CENTER LINE
- ..... 111TH ROAD AS-BUILT
- UTILITY POLE
- BLACK ROCK AERIAL F.O. PLANT